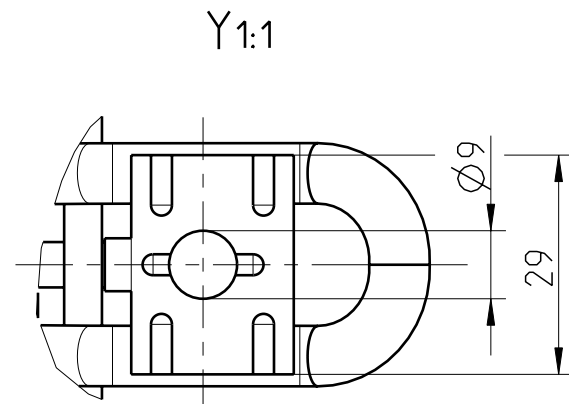
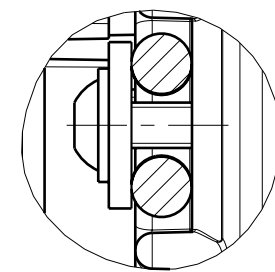


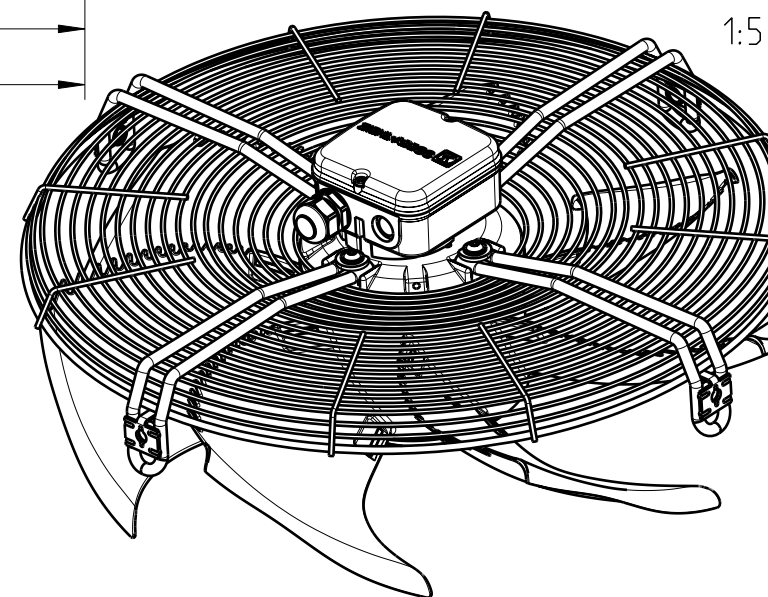
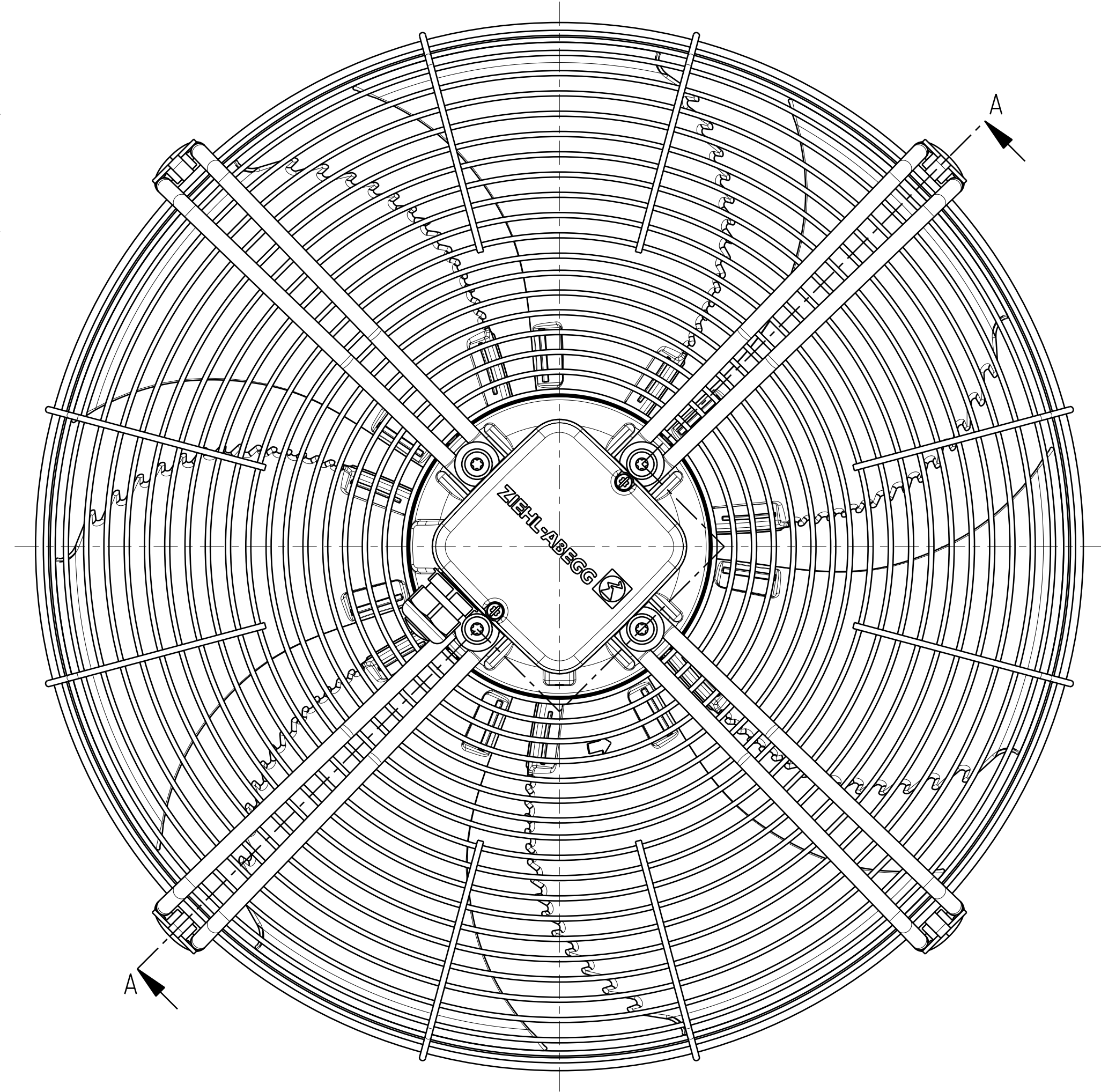
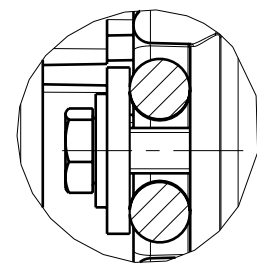
Förderrichtung V  
Airflow direction V



X  
1:1



oder  
or



ZEICHNUNGSNR	BENENNUNG	B1	B3	B5	MASSE
19050-S412.1	FN050-__S.4C.V7P1	127.0	191.3	97.5	10.1
19050-S412.2	FN050-__S.4F.V7P1	142.0	206.3	112.5	11.8
19050-S412.3	FN050-__S.4I.V7P1	162.0	226.3	132.5	13.3

Zeichnerische Darstellung entspricht 19050-S412.2  
graphical representation is 19050-S412.2

<p>This drawing is property of Ziehl-Abegg AG. The reproduction, distribution and utilization is subject to authorization. All rights reserved.</p>	Allgemeintoleranzen general tolerances		Maßstab scale	Motor 106	
			1:2	Kundenzeichnung customer drawing	
	Index index	Änderung revision	Datum date	Name name	Benennung title
	erstellt drawn	geprüft checked	Norm standard		FN050-__S.4.V7P1
Ersatz für replacement for		Maße in mm dimensions in mm	Teilenummer part number	Zeichnungsnummer drawing number	Blatt sheet
				19050-S412	A2 1